

BALTIC



LFO

LFC



Experience and reliability



FROM OUR HISTORY: EXPERIENCE, RELIABILITY AND CONCRETENESS.

BALTIC is the ideal washing solution for Industrial vehicles such as buses, cars, trucks, vans, articulated cars, tanker trucks, autosilos, garbage collection and transportation vehicles, dump trucks, military vehicles and special vehicles in general.



BALTIC



BALTIC

Experience and reliability

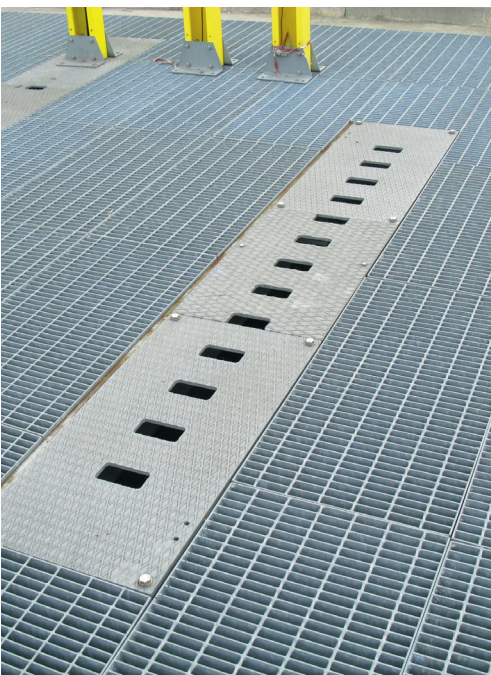
Over the years, BALTIC has become synonymous of reliability and concreteness. Strength, user-friendliness and very low maintenance costs, along with the flexibility of configuration and programming, makes BALTIC the ideal solution for industrial vehicle washing needs, both for public and private transportation vehicles, industrial transportation vehicles, guaranteeing excellent environmental condition.

VERSIONS: FROM THE BASIC VERSION (WITH OVERLAPPING) UP TO THE FULL VERSION WITH HIGH AND MEDIUM AND HIGH PRESSURE (SIDE AND TOP HIGH PRESSURE).

BALTIC also available in several versions, from the basic version with overlapping to the medium/high side or side and top pressure, with vehicle countour following bar. Depending on the needs, it can be supplied without the horizontal brush or it could become a "touchless" unit with high pressure. It is possible to install a drying system with blowers.



UNDERCHASSIS WASHING SYSTEM



BALTIC can be integrated with several solutions for high or medium pressure washing not only of the underbody, the sides and lower parts of vehicles (for example tank trucks), but also of wheels and mudguards. These systems could be equipped with rotating or fixed nozzles, obtaining great results also in case of particularly dirty vehicles.



BALTIC

BALTIC
Experience and reliability

ACCESSORIES INCLUDED



HIGH VISIBILITY TRAFFIC LIGHT

Two-way traffic light with adjustable support.



CANVAS SPLASHGUARDS

Splashguards in windshield wound.



CABLE SUPPORT

- **Single post**

Single post for cables and power supply pipes support for up to 18 meters rails length, made in hot galvanized steel.

- **Triple post with sliding trolley on carriage**

Triple post with sliding trolley on carriage for supporting cables and power supply for up to 26 meters rails length, made in hot-dip galvanized steel beams, supporting pillars.

- **Cable support by wall hanging bracket**

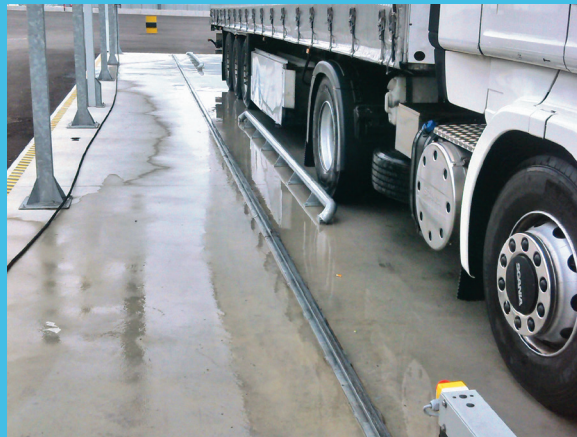
Wall mounting bracket for cable and pipe support up to 26 meters track length.

- **Caterpillar**

Caterpillar on columns, wall brackets or on floor, for rails length 26 m or 18 m.

RAILS

"Heavy Duty" rail profile and wheel guidance tubes.



CONTROL PANEL

- Electrical panel, connected to PLC, with Waterproof sealing on board.
- Auxiliary circuits powered by low voltage 24 V.
- Electrical safety lock .
- Motor protection with magneto-thermal.
- Cycles counter.
- Movement by Inverter.



PUSHBUTTON PANEL

The pushbutton panel is placed on a special structure close to the rails track and it is equipped with:

- Selectors for programs selection.
- Cycle start pushbutton.
- Vertical brushes and lifts Horizontal brushes pushbuttons.
- Gantry stop pushbutton.
- Emergency stop pushbutton.



OPTIONAL CONFIGURATIONS

HIGH PRESSURE RACK PUMPS



Rack with 3 or 6 high-pressure pumps of 7,5 kW, according to the configuration

DRYING BLOWERS ON BOARD



Optional draining system with 4 or 6 blowers

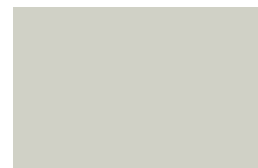
TECHNICAL FEATURES

The system is manufactured with a hot and/or painted galvanized structure (optional) and is equipped with inverters for the movement. It is equipped with dosing pumps for chemicals, emergency stop system, automatic winter discharge when required, anti-tipping system. Depending on the configuration, the system could be supplied with a single or tripe slotted handle, depending on the length of the rails, or with caterpillar on columns, wall or floor, depending on the installation site.

AVAILABLE COLOURS

Standard

BALTIC as standard will be supplied galvanized (not painted). Only the doors will be painted. It will be possible anyway to have the unit fully painted as optional.



RAL 7035 White

On request

These are the available colors for both, unit frame and doors.



RAL 7035 White



RAL 5017 Blue



RAL 3020 Red

THE PERFECT COMBINATION BETWEEN SIMPLE OPERATION AND SPEED OF OPERATION

LFO is the perfect solutions for washing public and private vehicles for commuters. Flexibility, speed and high performance, combined with minimum costs of management, make it an ideal tool for washing buses or trams up to 60 vehicles/hour. Sturdy structure and simple assembly guarantee an extreme reliable solution ideal for managing a Medium/Large vehicle fleetsize.



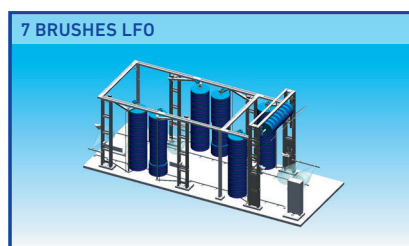
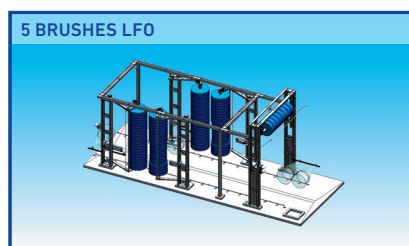
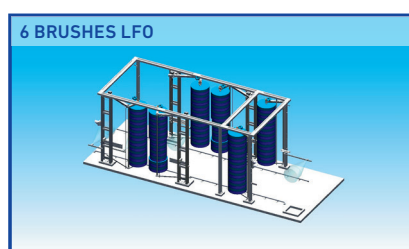
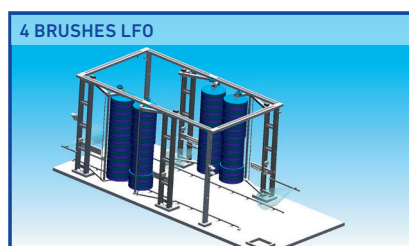
The range includes various washing heights and number of brushes and accessories depending on needs and request. LFO can be adapted to all transport vehicles, including trams or vehicles provided with pantograph.

LFO

LFO

Experience and reliability

CONFIGURATIONS



TECHNICAL FEATURES

Vertical brushes connected to the frame with oscillating arms: this system allows a "flag" movement for washing front, sides and rear of the vehicles. Pneumatic cylinders determine the opening and closing of the movement. The pressure of the brushes is pneumatically controlled. The "jumping mirror" operation is guaranteed. Horizontal brush: it produces a swinging movement, controlled by a counterweight system to keep the brush on the roof of the vehicle at a constant pressure. Pneumatic cylinders - controlled by solenoid valves and flush regulators - determine the vertical and horizontal brushes movement. Bristles in polyethylene filaments are assembled on modular supports coupled to the rotating shaft fixed with bolts. This allows quick replacement of the same when necessary. It is completed with control photocells for the operation to control the position and the passage during the washing process. Green/Red traffic lights for vehicle fleet control. Electrical panel with PLC: it could be position on board or remoted. Pumps: 2 pumps of 3 hp each supplying the washing / rinsing sectors: The power differs for the front and the frontrear (rinsing). In this way recycled water can be used fro the first phase (washing) and fresh water for the second pump (rinse). Alarm system "too high speed" with acoustic signal.

DIMENSIONS OF UNITS TECHNICAL DATA

	LFO							
	LFO 435	LFO 445	LFO 535	LFO 545	LFO 635	LFO 645	LFO 735	LFO 745
Number of vertical brushes	4	4	4	4	6	6	6	6
Number of horizontal brushes			1	1			1	1
Washing bay length	12,9 m	12,9 m	13 m	13 m	14 m	14 m	14,5 m	14,5 m
Washing bay width	5,5 m							
Machine structure height	4,7 m	5,6 m	4,7 m	5,6 m	4,7 m	5,6 m	4,7 m	5,6 m
Machine structure width	4,8 m							
Working machine structure width	5,38 m							

LFO

LFO
Experience and reliability

HIGH PERFORMANCE IN REDUCED SPACES



LFC is the solution for washing fleet of vehicles for public and private transportation to be installed in small available areas. This unit has a capacity of about 30 Vehicles per hour. This simple, although strongly built solution, allows optimal performance an efficient results with an unsurpassed maintenance and management costs. Electromechanical operation with photocells activation, makes really accurate washing, also including some really necessary functions such as "mirrors controls". Modular galvanized structure (painted on request). Complete with 5 control brushes pneumatically controlled (4 vertical brushes and 1 horizontal brush) Wash height 4,5m. The system can be equipped on request with some arches for emollients, wax and eventually drying system.



DIMENSIONS OF UNITS TECHNICAL DATA

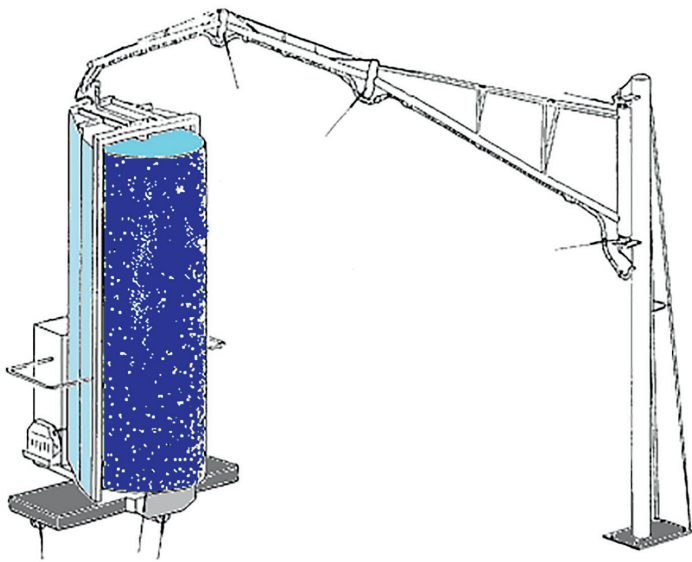
LFC	
LFC 545	
Number of vertical brushes	4
Number of horizontal brushes	1
Washing bay lenght	7,5 m
Washing bay width	6,5 m
Machine structure height	5,6 m
Machine structure width	4,55 m
Working machine structure width	6,5 m

LFC

LFC

Experience and reliability

THE IDEAL SOLUTION FOR THE MONO BRUSH WASHING



Roll Wash is the one-brush system proposed by Ceccato for manual operation. Wash height 4.10 m. Strongly built with galvanized steel, the unit is equipped, unlike the competition, with an articulated arm to easily turn around the vehicle with power cables and water piping for washing operation, in order to avoid cables and pipes being placed disordered on the floor. It ensures safety, less risk of stumbling and facilitating the task of the operator himself. The plant operates on a medium pitch size approx. 17 m x 6 m.

DIMENSIONS OF UNITS TECHNICAL DATA

ROLL WASH	
ROLL WASH 4.1	
Number of vertical brushes	1
Washing bay length	17 m
Washing bay width	6 m
Machine structure height	5,5 m
Machine structure width	2,6 m
Working machine structure width	4,1 m

ROLL WASH

ROLL WASH
Experience and reliability



Technical data are subject to variations; the Manufacturer reserves the right to update the documentation, without any obligation to inform the customer about the changes. Pictures are not binding – for information only – subject to technical changes without prior notice.

CARATTIPOLETTO ADV



Ceccato S.p.A.
Via Selva Maiolo 5/7
36075 Alte Ceccato
di Montecchio Maggiore
Vicenza - Italy

t +39 0444 708 411
f +39 0444 708 405
info@ceccato.it
www.ceccato.it